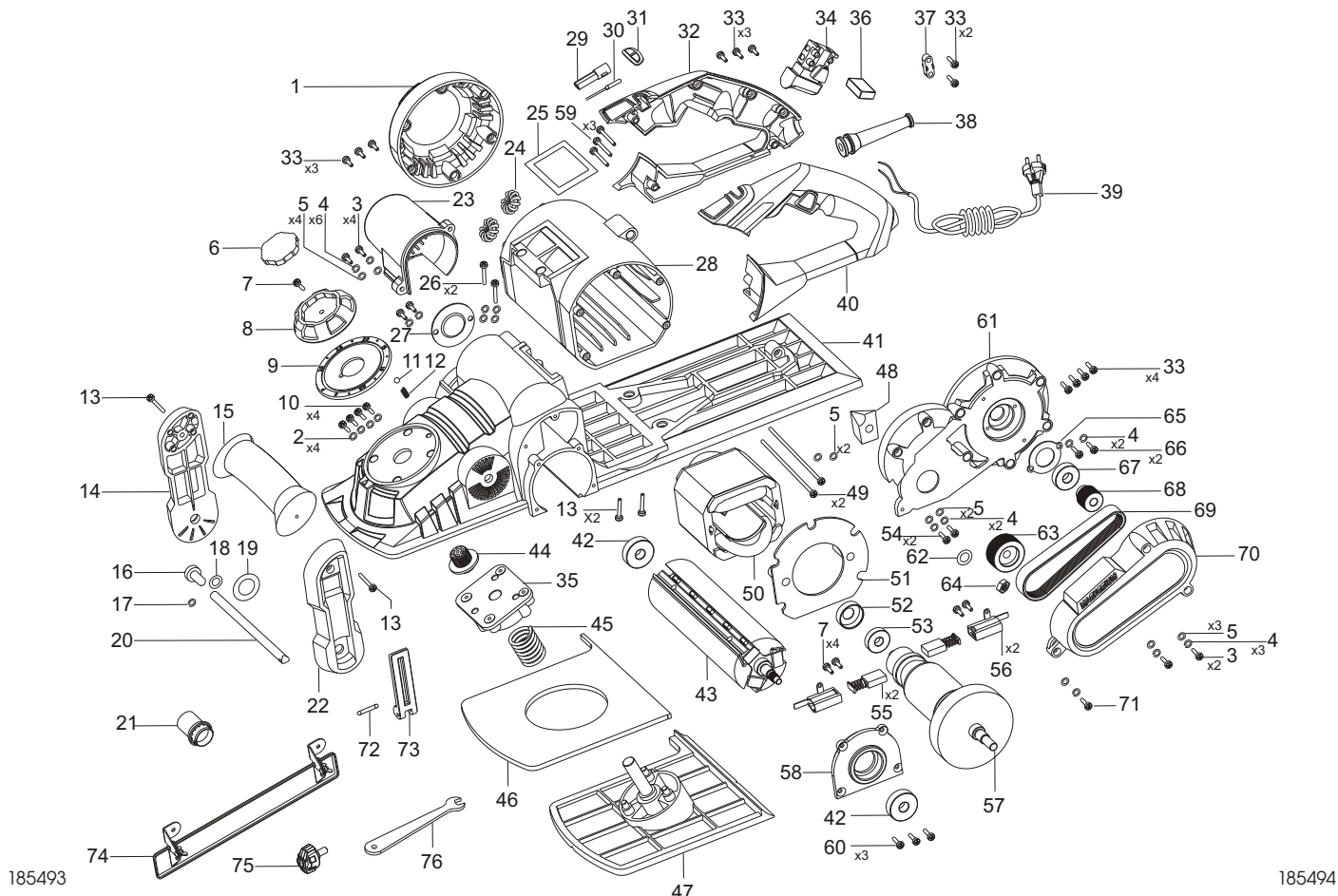


POS. No.	Ref.No.	Description	POS. No.	Ref.No.	Description
1	185431	Motor cover	39	185416	Power Cord/4,2m
2	185489	Spring washer M6	40	185428	Left Handle
3	185447	Screw 4x12	41	185430	Main Housing
4	185448	Spring washer Φ4	42	185456	Bearing 6200 ZZ
5	185449	Flat Gasket Φ4	43	185457	Plane Cutter Body Components
6	185463	Knob Cover	44	185469	Adjustment nut cover
7	185443	Tapping screw 4x10	45	185471	Adjustment Spring
8	185465	Knob base	46	185472	Dustproof Mat
9	185466	Dial	47	185473	Adjustment Plate
10	185488	Bolt 6x20	48	185481	Air Plate
11	185467	Steel ball Φ3,5	49	185436	Screw 4x70
12	185468	Small Spring	50	185435	Stator Component
13	185427	Screw 4x16	51	185437	Air Deflector Ring
14	185474	Front Handle Right	52	185438	Shock Absorber Ring
15	185475	Front handle	53	185439	Bearing 609 ZZ
16	185482	Screw	54	185461	Screw 4x25
17	185490	Spring washer M5	55	185441	Brush
18	185483	Flat Gasket 5x14x1	56	185442	Copper brush grip
19	185478	Flat Gasket Φ8	57	185440	Rotor Components
20	185476	Locking Lever	58	185458	Bearing Support
21	185484	Dust/chip Extraction Adaptor	59	185426	Screw 4x30
22	185477	Front HandleLeft	60	185459	Nut 4x10
23	185460	Dust/chip Extraction Port	61	185444	Fan Blad Cover
24	185432	Industance components	62	185495	Special Washer
25	185429	Nameplate block(base)	63	185451	Driven Wheel
26	185434	Screw 4x20	64	185452	Nut M6
27	185462	Bearing Baffle	65	185445	Bearing Press Plate
28	185433	Motor Chamber	66	185464	Bolt 4x8
29	185423	LED Light Support	67	185446	Bearing 6000
30	185424	LED Light	68	185450	Driving Wheel
31	185422	LED Cover	69	185453	Drive Belt
32	185425	Right Handle	70	185454	Belt Cover
33	185418	Screw 4x13	71	185455	Screw 4x20
34	185421	Switch	72	185479	Strainght pin 3x18
35	185470	Adjustment Support	73	185480	Locking Wrench
36	185420	Capacitor/0,22UF	74	185485	Angle Plates Component
37	185419	Driven Wheel	75	185486	Locking Knob
38	185417	Cable Shield	76	185487	Spanner



185493

185494